

AP-KP2

User Manual

Precautions



This symbol is intended to alert the user of important operating and maintenance (servicing) instructions in the literature provided with the equipment.



This symbol is intended to alert the user of the presence of uninsulated dangerous voltage within the product's enclosure that may present a risk of electric shock.

Caution

Read Instructions • Read and understand all safety and operating instructions before using the equipment.

Retain Instructions • The safety instructions should be kept for future reference.

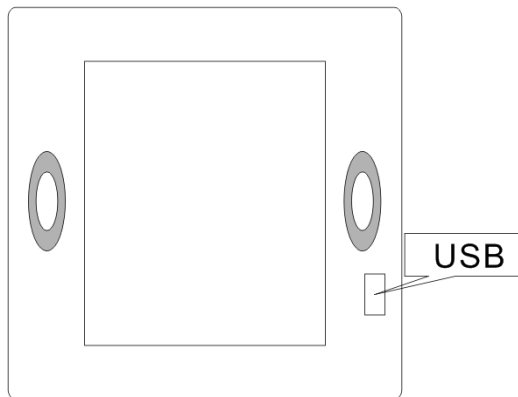
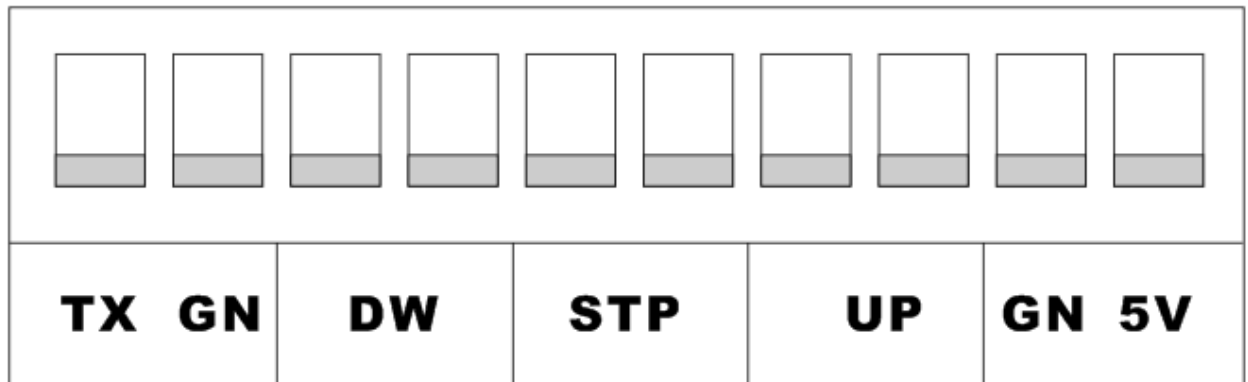
Follow Warnings • Follow all warnings and instructions marked on the equipment or in the user information.

Avoid Attachments • Do not use tools or attachments that are not recommended by the equipment manufacturer because they may be hazardous.

Contents

Connecting Block	2
Connection Descriptions.....	2
Front Panel	3
Driver Install.....	4
Management Software	5
Sending multiple commands with one button press	6
Programming the Source Input buttons.....	7
Installation	7
Step 1. Removing the faceplate.....	8
Step 2. Prepare the back box.....	9
Step 3. Thread cables.....	10
Step 4. Make Connections.....	11
Step 5. Attach keypad to back box using supplied screws	12
Step 6. Snap on faceplate trim cover	13

Connecting Block



Connection Descriptions:

TX : RS232 send

GN : RS232 ground

DW : "SCREEN DOWN" relay

1. Pressing the "SCREEN DOWN" button on the KP-2 closes the DW relay for 120 seconds and then automatically opens it
2. If Linkage Mode is chosen, pressing the "ON" button on the KP-2 will also close the DW relay for 120 seconds and then automatically opens it

STP : "SCREEN STOP" relay

1. Pressing the "SCREEN STOP" button on the KP-2 closes the STP relay for 120 seconds and then automatically opens it

UP : "SCREEN UP" relay

1. Pressing the “SCREEN UP” button on the KP-2 closes the UP relay for 120 seconds and then automatically opens it
2. If Linkage Mode is chosen, pressing the “OFF” button on the KP-2 will also close the UP relay for 120 seconds and then automatically opens it

GN : Ground power wire

5V : 5V / 1A Power input

USB : USB port used to download RS232 command strings from programming software

Front Panel



ON Button:

1. When pressed, the KP-2 sends the ON Control Codes to the controlled equipment and the indicator on the button starts to flash. After 10 seconds indicator will stay in steady ON status.
2. If the KP-2 is in Linkage Mode, pressing the ON button will close the DW relay for 120 seconds and then automatically open it

OFF Button:

1. When pressed, the KP-2 sends the OFF Control Codes to the controlled equipment and the indicator on the button starts to flash. After 10 seconds, the indicators on the OFF button and all other buttons will be off.
2. If the KP-2 is in Linkage Mode, pressing the OFF button will close the UP relay for 120 seconds then open it automatically.

PC1, PC2, VIDEO, WIRELESS (WI-FI), HDMI, USB

1. When these buttons are pressed, the KP-2 will send the respective Control Codes to the controlled equipment, while at the same time the indicators on the buttons will be ON.
2. The Control Codes matching the buttons are downloaded to the KP-2 through the Management Software
3. The buttons in this group are programmed to be mutually exclusive. Pressing any button in the group will release the others.

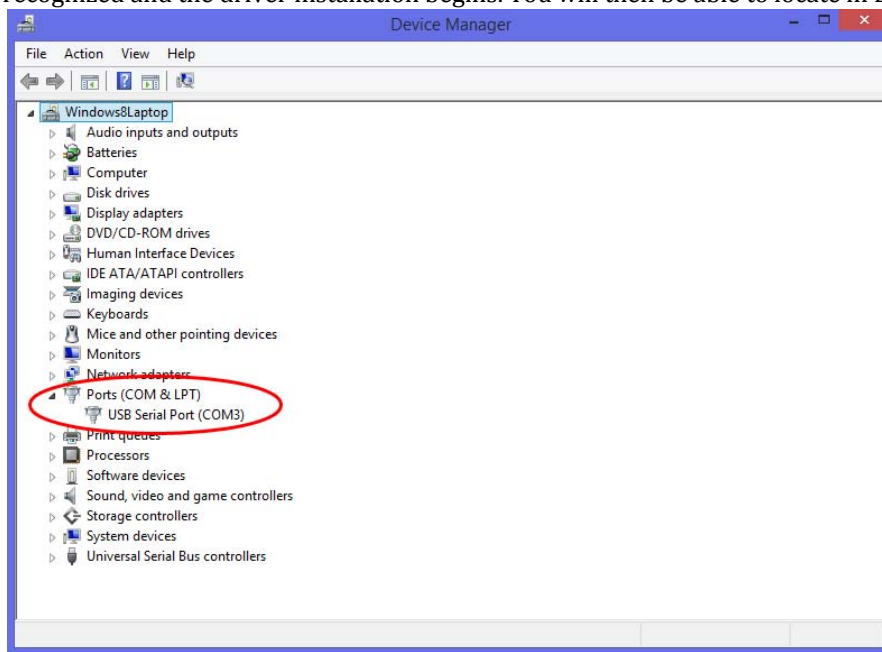
SCREEN UP Button: When pressed, the UP relay will close, and after 2 minutes, will be open.

SCREEN DOWN: When pressed, the DW relay will close, and after 2 minutes, will be open.

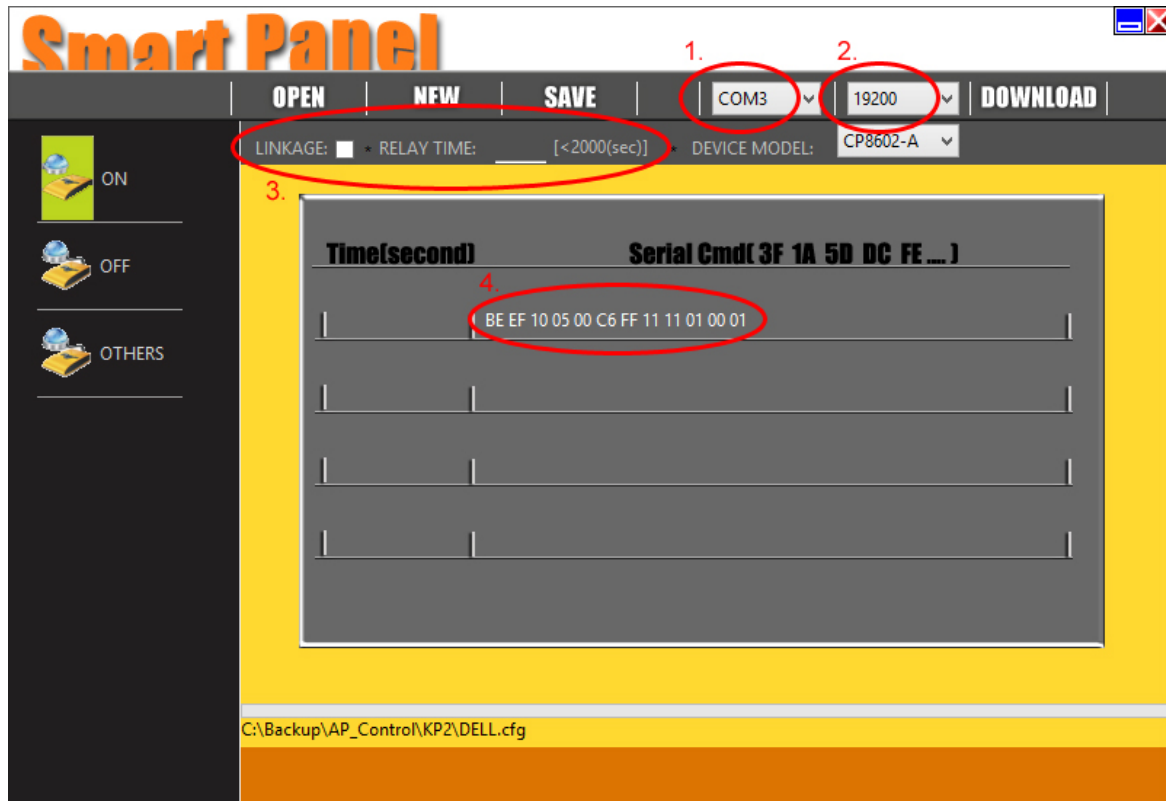
SCREEN STOP Button: When pressed, the STP relay will close and after 2 minutes will be open.

Driver Install

The KP-2 includes a USB-to-Serial Port conversion module. Upon connection to PC via the USB cable the KP-2 is recognized and the driver installation begins. You will then be able to locate in Device Manager under COM ports

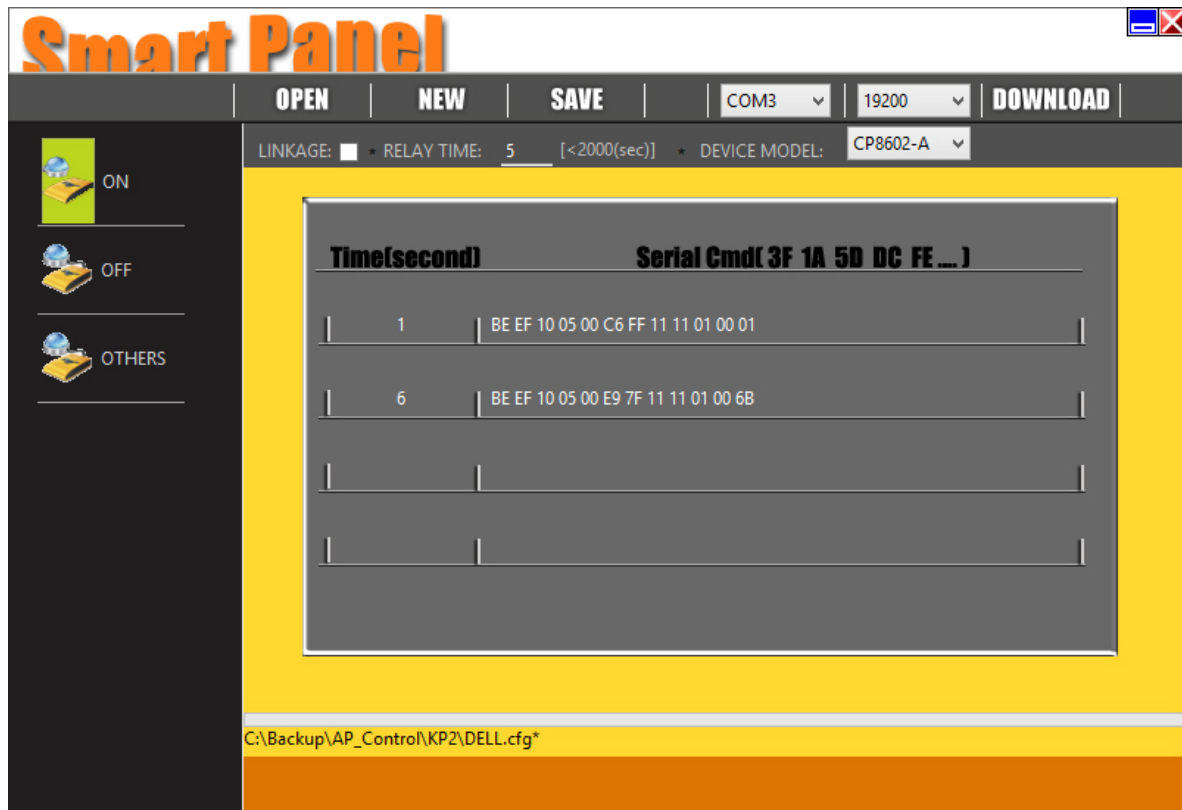


Management Software



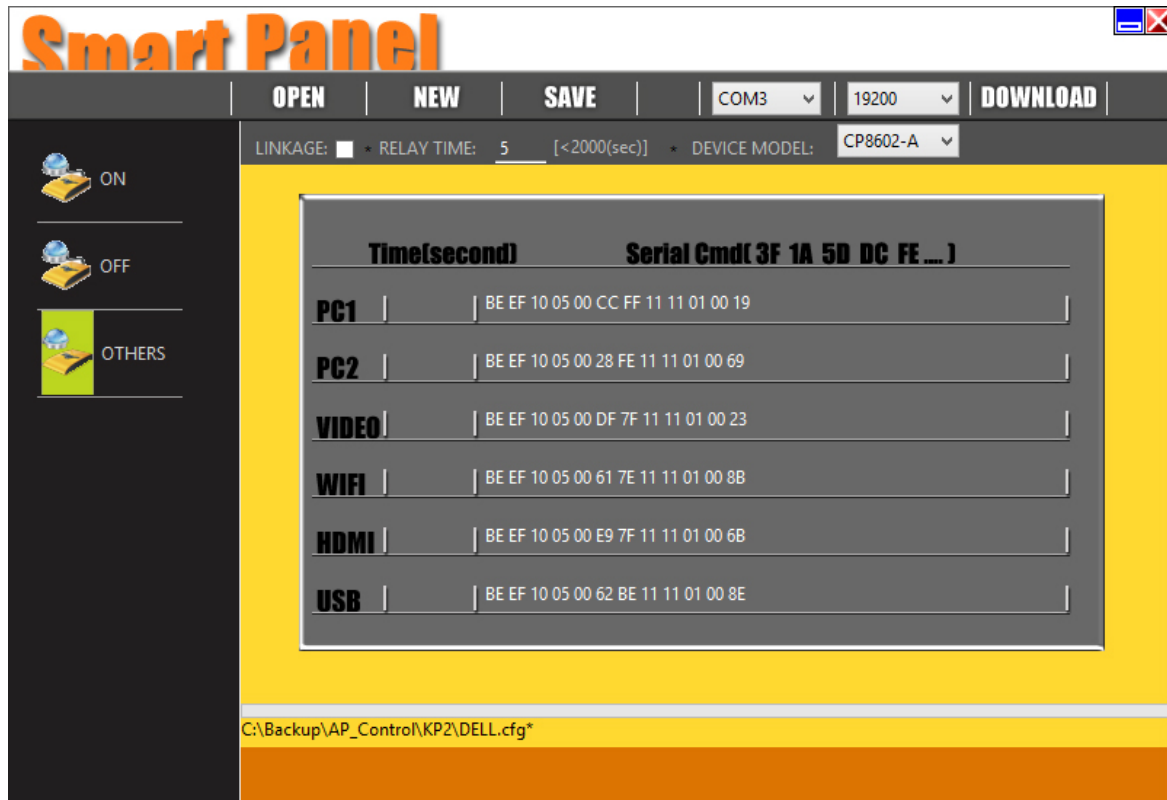
1. Select correct COM port corresponding to COM port shown in Device Manager
2. Select serial baud rate of projector or other device to be controlled. Device Model is CP8602-A
3. If Linkage mode box is checked the DW relay will be closed for the default time of 120 seconds and then opened automatically.
4. Enter serial command string as two digit hex codes all in Uppercase with a space between each

Sending multiple commands with one button press



1. ON and OFF can be programmed to send up to 4 command strings with time delay. In the example above the ON button sends the command to power on the projector 1 second after pressing the ON button and sends the command to switch to the HDMI input 5 seconds later or 6 seconds after the initial button press

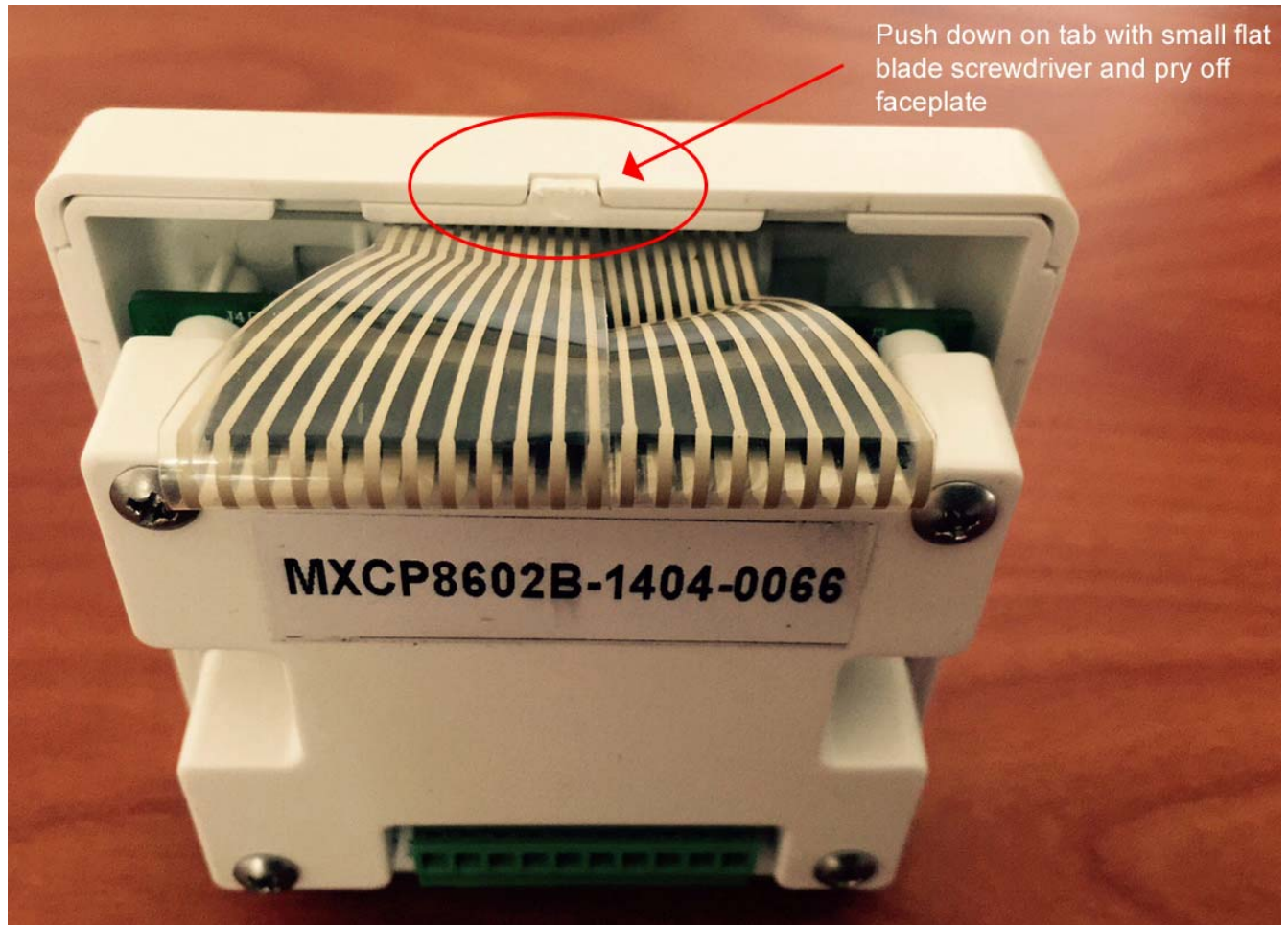
Programming the Source Input buttons



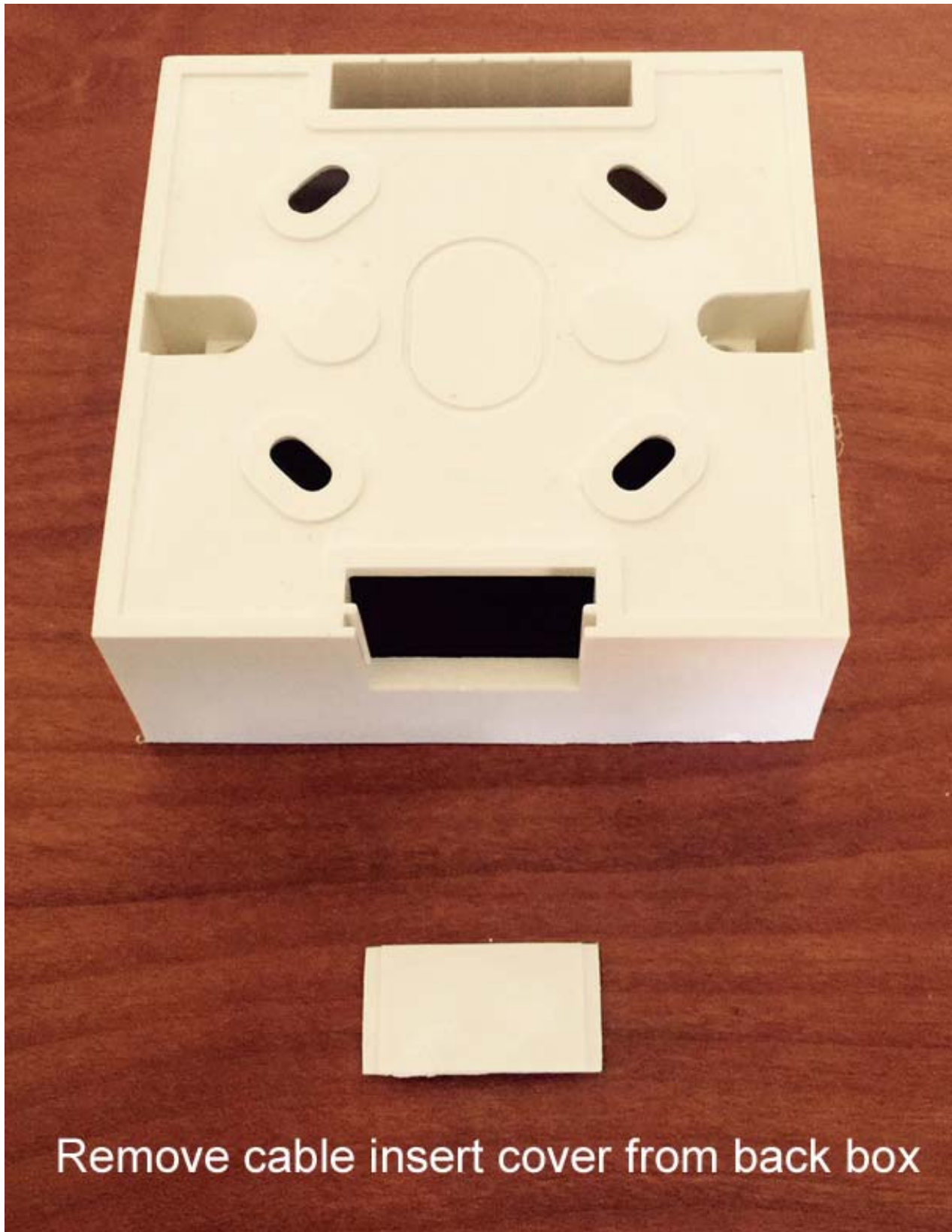
When programming is completed press Download to send to KP-2. When the Download is finished, the KP-2 will beep several times acknowledging program received

Installation

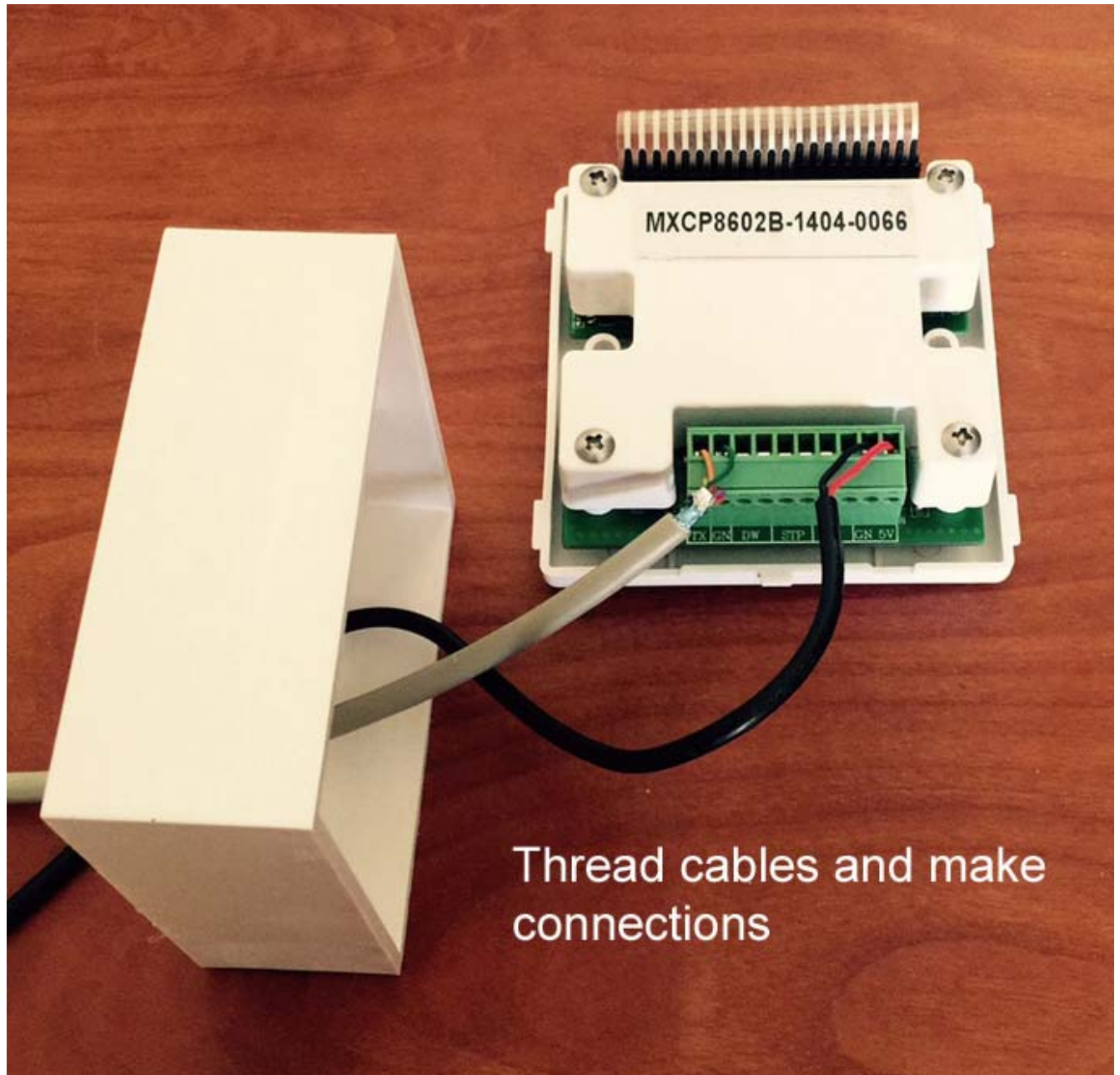
Step 1. Removing the faceplate



Step 2. Prepare the back box



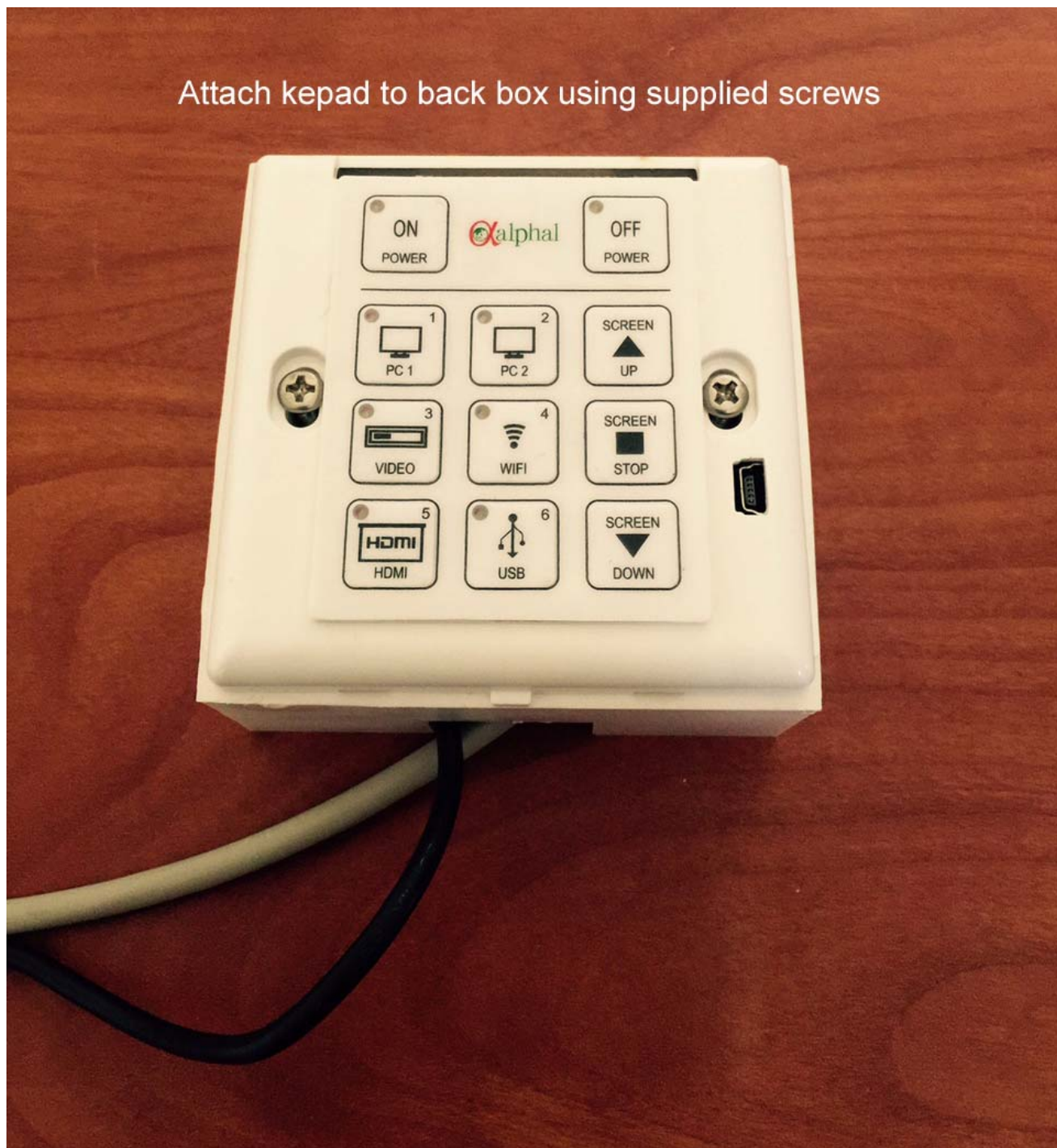
Step 3. Thread cables



Step 4. Make Connections



Step 5. Attach keypad to back box using supplied screws



Step 6. Snap on faceplate trim cover

